



## 1     **Summary**

2     A field study was initiated to evaluate the effectiveness of rotationally grazing goats  
3     (*Capra hircus hircus*) in combination with cattle (GC; 12 goats and 6 steers) or cattle  
4     (*Bos taurus*) alone (C: 6 steers) to manage vegetation in an overgrown mountain  
5     pasture (8.4 ha) that had not been grazed for two years. Black locust (*Robinia*  
6     *pseudoacacia*) trees were practically eliminated over the 4-year period in both C and  
7     GC ( $P < .01$ ) but grew to a height of 5.3 m in the control (CTL). Height of multiflora rose  
8     (*Rosa multiflora*) bushes were controlled in GC (avg .6 m) but increased to 1.8 m in C  
9     and 2.5 m in CTL (C vs GC:  $P < .02$ ; CTL vs C + GC:  $P < .01$ ). Similarly, multiflora rose  
10    canopy area was controlled in GC (avg .5 m<sup>2</sup>), but increased in C (from .6 to 7 m<sup>2</sup>;  $P <$   
11    .01) and greatly increased in CTL (from .5 to 11 m<sup>2</sup>;  $P < .01$ ). The cattle provided only  
12    modest control of multiflora rose. Inclusion of goats resulted in a reduction of live canes  
13    of multiflora rose at the conclusion of the study relative to other treatments (41% vs 96%  
14    vs 96%). Herbaceous vegetative cover decreased in CTL (75 to 40%;  $P < .01$ ) but  
15    remained similar in C and GC (avg 81%), whereas the cover by grass species  
16    increased ( $P < .01$ ) in the grazed pastures. Results indicated that controlled grazing  
17    improved mountain pastures, and that grazing goats with cattle was especially  
18    beneficial for the control of multiflora rose bushes and other woody species.

19  
20    **Key Words:** Browse, Cattle, Goat, *Robinia pseudoacacia*, *Rosa multiflora*, *Rubus*,  
21    Vegetation Management

1     **Introduction**

2     Much of hill-land pasture in the Appalachian region of North Carolina is infested by  
3     brushy vegetation including multiflora rose (*Rosa multiflora* Thunb.). Multiflora rose was  
4     imported from Japan in 1886 for use in erosion control and as a rootstock for some  
5     varieties of ornamental roses (Mays and Kok, 1988). According to a 1977 survey by the  
6     North Carolina Department of Agriculture, multiflora rose had infested 58,514 ha of  
7     pastureland and an additional 18,480 ha of non-pastureland in 53 mountain and  
8     western counties. Since then, invasion of productive land by multiflora rose has  
9     increased, and in cases of heavy infestation, access to pasture and recreational areas  
10    has been severely restricted.

11  
12    Controlling multiflora rose usually involved mechanical cutting and the use of herbicides.  
13    Multiflora rose seeds are widely dispersed by birds, rodents and water, and may remain  
14    viable in the soil for up to 20 years (Harvey, 1996). Consequently, an effective  
15    integrated management program is needed for years after controlling the original plants  
16    (Kay et al., 1995). Goats (*Capra hircus hircus*) have been useful as biological agents  
17    for the control of undesirable plants due to increased restrictions for herbicide use and  
18    elevated costs of other control methods such as mechanical cutting (Magadlela et al.,  
19    1995; Pearson and Martin, 1991).

20  
21    Multiflora rose has been effectively controlled by goats (Luginbuhl et al., 1999).  
22    Integrating goats into grazing systems enables them to utilize the palatable brush as a

1 feedstuff to produce a saleable commodity while suppressing the brush, resulting in  
2 greater grass production for cattle (Harrington et al., 1982). The inclusion of goats in a  
3 grazing system for mixed brush/grass pastures gave superior utilization compared to  
4 cattle alone (du Toit, 1972) by reducing brush competition and improving the pasture for  
5 cattle (Mackenzie 1993). The objective of this study was to investigate the effects of  
6 addition of goats to cattle grazing alone for controlling woody species and herbaceous  
7 vegetation in hill-land pastures.

8

## 9 **Materials and Methods**

10 A field study was conducted at the North Carolina Department of Agriculture and  
11 Consumer Services Research Station located in Waynesville at approximately 35.50° N  
12 latitude and 83.00° W longitude. Treatments were control (CTL), cattle alone (C) and  
13 goats with cattle (GC). There were three replicated pastures for each treatment with  
14 pastures being the experimental unit. Animals were rotationally grazed on the replicated  
15 pastures and the study was conducted over a four year period. The study site was an  
16 abandoned orchard (8.4 ha) that had been severely infested by multiflora rose and other  
17 woody vegetation. Over a four-year period, the area had been grazed by goats and  
18 larger trees had been removed by cutting. At the time this study started, the orchard  
19 had not been grazed for two years and multiflora rose and other brush had increased.  
20 The orchard, located on a Hayesville Loam soil, had slopes of 30 to 60%. The study  
21 site was fertilized each spring according to soil test results. Purebred and crossbred  
22 Boer bucks (43 kg initial BW) were used in 1996, whereas crossbred Boer does (30 kg

1 initial BW) were used in subsequent years. Paddocks were grazed with crossbred  
2 Angus steers (260 kg initial BW) during the first three years of the study, and with  
3 Holstein steers (199 kg initial BW) in 1999. In 1996, the two groups of grazing animals  
4 were composed of 6 steers and 6 steers plus 9 goats. Because of the increased amount  
5 of forage growth in subsequent years, the number of steers was increased to seven  
6 head, and the ratio of goats to cattle was increased to 2:1. During short periods of lush  
7 growth (2 to 3 wk), additional grazer animals (cattle and goats) were added. Grazers  
8 were removed when pasture availability was limited. Grazing periods were: 8 May to 24  
9 September in 1996, 24 April to 10 November in 1997, 24 April to 2 September in 1998,  
10 and 15 April to 2 September in 1999. Due to drought, animals had to be removed from  
11 the paddocks from 1 August to 7 October 1997. Animals were grazed on adjacent  
12 mountain pastures during the 1997 drought period. Each paddock was fenced with six  
13 strands of electrified high tensile wire. All animals had free access to a low copper  
14 sheep mineral mix (SSC - 317803; Southern State Cooperative, Richmond, VA 23260).  
15 Water was supplied within each paddock. The GC and C paddocks were grazed on the  
16 same dates within each replication. The two groups of animals (goats + cattle grazing  
17 together and cattle grazing alone) were rotated to the next replicated paddocks when  
18 the average available forage present was approximately 5 cm or less.

19

### 20 *Multiflora Rose and Black Locust Measurements*

21 Random multiflora rose bushes were tagged to monitor the effects of browsing on plant  
22 survival, approximately 5 plants in each CTL and 10 for each grazed paddock.

1 Measurements were taken spring and fall immediately before and after each grazing  
2 season. Tagged rose bushes were identified as individual plants or as a clump of  
3 contiguous plants. Tagged rose bushes were scored for canopy height, canopy area  
4 covered by live canes (stems), and the percent of canes which were live relative to the  
5 total number of existing canes per individual plant or clump at each observation time.  
6 Height was determined by measuring the average canopy height. Canopy area was  
7 determined by measuring the diameter of the canopy in two directions for each tagged  
8 rose bush or clump of rose bushes.

9  
10 Four squares measuring 3 x 3 m were marked with wooden pegs in each paddock for  
11 black locust (*Robinia pseudoacacia* L.) measurements. The number of black locust  
12 clumps found within each square was recorded and the height of each clump measured  
13 to determine canopy height. Number of live black locust clumps relative to existing  
14 clumps were also recorded.

#### 16 *Herbaceous Plant Measurements*

17 Species composition of herbaceous vegetation was estimated using permanently  
18 marked 100 x 10 cm rectangular quadrats (10 in the control and 30 in each grazed  
19 paddock). Plant species located within the 1,000 cm<sup>2</sup> rectangle were identified and  
20 recorded (Luginbuhl et al., 1999). Plant frequency was defined as the percentage of  
21 observation points within a given paddock that contained at least one plant of that  
22 individual plant species. In addition, percent vegetative ground cover and percent

1 vegetative cover as grass were visually estimated within the rectangular area at each  
2 observation point. Measurements and visual observations were recorded spring and fall  
3 immediately before and after each grazing season.

#### 4 *Statistical Analyses*

5 The experimental design was a randomized complete block with three agronomic  
6 replicates and a factorial arrangement of three grazing treatments (CTL, GC, and C)  
7 and two observation seasons (spring and fall). Treatment and season effects were  
8 tested by the GLM procedure of SAS (1998) using repeated measure variables  
9 generated by multiplying the original data by linear coefficients for orthogonal  
10 comparisons in four equally spaced years. Data from year 1, 2, 3, and 4 were multiplied  
11 by -3, -1, +1 and +3, respectively (Steel et al., 1997), then summed. The model used  
12 was  $Y = \mu + \text{replicate} + \text{treatment} + \text{season} + \text{treatment} \times \text{season} + \text{error}$ . Pre-planned  
13 orthogonal contrasts (Steel et al., 1997) were used as follows to determine differences  
14 among treatments: 1) CTL vs GC and C and 2) GC vs C.

15

## 16 **Results and Discussion**

### 17 *Multiflora Roses, Black Locust and Brambles*

18 When grazed with cattle, goats were very effective in controlling multiflora rose bushes.  
19 The effects of repeated defoliation by goats on multiflora rose canopy area and height  
20 were clearly observed by October 1996 and October 1997, respectively (Figures 1 & 2).  
21 Multiflora rose canopy area declined steadily from 2.5 m<sup>2</sup> in April 1997 to .4 m<sup>2</sup> (P <  
22 .01) in October 1999 in the GC pasture, whereas multiflora rose height decreased at a

1 slower rate, from .8 m in October 1996 to .5 m in October 1999 ( $P < .01$ ). Conversely,  
2 over the four grazing seasons multiflora rose height and canopy area increased linearly  
3 ( $P < .01$ ) in both CTL and C pastures, but the rate of increase was slower in the C  
4 pasture. In the CTL pasture, height and canopy area of multiflora roses bushes  
5 increased, respectively, from .6 m and .5 m<sup>2</sup> in May 1996 to 2.5 m and 10.7 m<sup>2</sup> in  
6 October 1999 ( $P < .01$ ). Respective increases in height and canopy area for the C  
7 pasture were from .6 m and .6 m<sup>2</sup> in May 1996 to 1.8 m and 6.6 m<sup>2</sup> in October 1999 ( $P$   
8  $< .01$ ). Occasional browsing of multiflora roses bushes by cattle and trampling around  
9 the bushes during grazing most probably reduced multiflora rose growth. After four  
10 grazing seasons, only 41% of multiflora rose canes were still alive in the GC pastures,  
11 compared to 95.5% in both CTL and C pastures ( $P < .02$ ; data not shown). The  
12 reduction in height, canopy area and number of live canes of the multiflora rose bushes  
13 in the GC pastures after four growing seasons indicated that their condition was  
14 severely affected. Luginbuhl et al. (1999) observed a greater degree of mortality in  
15 multiflora rose by C and GC resulting in a 100 and 92% mortality of the canes at the end  
16 of the fourth year. Spring and summer are critical browsing times to reduce woody  
17 vegetation, whereas browsing after 1 August has very limited impact (W. B. Bryan,  
18 personal communication).

19  
20 Grazing cattle alone or with goats had a similar effect on black locust height (Figure 3).  
21 Repeated defoliation by goats and(or) cattle very effectively controlled the height of  
22 black locust trees, whereas in the CTL pasture black locust trees increased in height

1 from 1.4 m in May 1996 to 5.3 m in October 1999. After four grazing seasons, 0% of the  
2 black locust clumps were found alive in the GC pasture, and only 25% were alive in the  
3 C pasture (data not shown); by contrast, 100% of the black locust clumps were alive in  
4 the CTL pasture ( $P < .08$ ). Cattle have been categorized as non selective roughage  
5 grazers (Hoffman, 1985), but in the present study they were repeatedly observed  
6 defoliating the tender shoots of black locust trees. When given the opportunity or need,  
7 cattle will alter their eating behavior and become opportunistic browsers.

8  
9 Goats grazing with cattle and cattle grazing alone were also very effective in controlling  
10 brambles (*Rubus* spp.). Brambles were grazed to a similar extent in both GC and C  
11 pastures (Figure 4), whereas their frequency in CTL increased from 6.7 % in October  
12 1996 to 79.6% in October 1999 ( $P < .01$ ). The low frequency of brambles in April 1997  
13 in all pastures cannot be explained. Decreases in the frequency of brambles similar to  
14 those observed in CTL in April 1997 were reported by Luginbuhl et al. (1999). Research  
15 in West Virginia has shown that brambles were reduced from 39 to 9% by grazing hill-  
16 land pastures with cattle, sheep and goats (Mills and Bryan, 1983). In that study, goats  
17 and sheep defoliated brambles 100% the first year and controlled the number and  
18 height of regrowth shoots adequately the second year. The same authors also reported  
19 poor defoliation and control of brambles regrowth by cattle. In the present study,  
20 brambles were young and consisted mostly of green and tender shoots, and thus may  
21 have been more palatable to cattle than older plants.

1 Goats choose the most nutritious parts and portions of plants and given a choice among  
2 grasses, forbs and shrubs, they usually prefer high shrub diets (Wilson et al., 1975;  
3 Bryant et al., 1979). Grazing on a power line right of way, goats reduced brush cover  
4 from 45 to 15% in one year, and to 2% after five years of grazing (Magadlela et al.,  
5 1995). Selective feeding and a strong preference for browse (Norton, 1984) allows  
6 goats to reduce variations in dietary energy and protein caused by environmental  
7 conditions or management (Fedele et al., 1991). Because of their versatile  
8 grazing/browsing behavior, goats are able to successfully control encroaching  
9 vegetation while at the same time selecting a diet that meet their nutritional  
10 requirements (Child et al., 1985). This opportunistic behavior has served goats well in  
11 situations where other domestic ruminant species would be at a clear disadvantage or  
12 even nutrient deficient (Coblentz, 1977; Mackenzie, 1993).

13

#### 14 *Herbaceous Plants*

15 Thirty-four of the 58 plant species recorded at the permanent transect sites occurred  
16 with a frequency of 15% or more during the course of the four grazing seasons. These  
17 plants were bluegrass (*Poa pratensis* L.), bromegrass (*Bromus* L. spp.), chickweed  
18 (*Stellaria* L. spp.), crabgrass (*Digitaria sanguinalis* L.), dandelion (*Taraxacum officinale*  
19 Weber in Wiggers), tall fescue (*Festuca arundinacea* L. Schreb.), geranium (*Geranium*  
20 L. spp.), goldenrod (*Solidago canadensis* L.), greenbriar (*Smilax rotundifolia* L.),  
21 honeysuckle (*Lonicera japonica* Thunberg.), horsenettle (*Solanum Carolinense* L.), mint  
22 (*Mentha* L. spp.), mullein (*Verbascum thapsus* L.), mustard (*Brassica kaber* spp.),

1 nimblewill (*Muhlenbergia schreberi* J.F. Gmel), orchardgrass (*Dactylis glomerata* L.),  
2 oxalis (*Oxalis stricta* L.), poison ivy (*Toxicodendron radicans* [L.] Kuntz), red clover  
3 (*Trifolium pratense* L.), red fescue (*Festuca rubra* L.), redtop (*Agrostis stolonifera* L.),  
4 smartweed (*Polygonum pensylvania* L.), sweet vernal grass (*Anthoxanthum odoratum*  
5 L. spp.), velvetgrass (*Holcus lanatus* spp.), violet (*Viola* L. spp.), white clover (*Trifolium*  
6 *repens* L.), wild clematis (*Clematis virginiana* L.), and wild strawberry (*Fragaria*  
7 *virginiana* Duchesne). Of those, the most prevalent plants were three important forage  
8 species (bluegrass, tall fescue and white clover), dandelion (a low productivity species  
9 consumed by G and C), sweet vernal grass (a grass species not readily consumed by  
10 either G or C following stem elongation), horsenettle and nimblewill (undesirable  
11 species not consumed by either G or C), and honeysuckle (consumed by C and relished  
12 by G). Sweet vernal grass and nimblewill were observed at higher frequencies than the  
13 other undesirable species.

14  
15 Over the four grazing seasons, the vegetative ground cover was similar (avg 89.6%) in  
16 both the GC and C pastures (Figure 5). Vegetative ground cover in the CTL pasture  
17 followed the same trend during the first two grazing seasons, but decreased thereafter,  
18 from 97.1% in April 1998 to 66.3% in October 1999 ( $P < .01$ ). The cover from  
19 herbaceous grass species remained the same (Figure 6) in both the GC and C  
20 pastures (avg 81%). Conversely, cover from herbaceous grass species decreased  
21 linearly in the CTL pasture, from 78% in May 1996 to 39% in October 1999 ( $P < .01$ ).  
22 The shift in both vegetative ground cover and botanical composition in the CTL pasture

1 was attributed to the overstory of brush, trees and rose bushes that shaded out  
2 herbaceous vegetation on the ground. A similar shift in botanical composition was  
3 observed by Luginbuhl et al. (1999), which allowed desired grasses to be more  
4 competitive.

5

6 Bluegrass frequency declined in CTL (Figure 7) compared to the GC and C pastures ( $P$   
7  $< .01$ ), and was absent from CTL in September 1998 and April 1999. Grazed treatments  
8 had a similar frequency of bluegrass (avg 50.1%) with the GC treatment tending to have  
9 a lower frequency. Bluegrass, a cool-season grass, was strongly seasonal ( $P < .01$ )  
10 being observed at a higher frequency in spring than fall. Bluegrass frequency declined  
11 in CTL (Figure 7) until it nearly disappeared from the pasture. Tall fescue frequency was  
12 high in all pastures (Figure 8) and did not change during the course of the study (avg  
13 77.2%). Although present ( $P < .01$ ), the clear seasonality exhibited by bluegrass was  
14 not observed for tall fescue. White clover played a minor role in CTL ( $P < .02$ ) where it  
15 was only observed in spring and fall 1996 and spring 1999 (Figure 9). Lack of sunlight  
16 at the ground level resulting from the natural successional reforestation process in the  
17 CTL pasture did not seem to affect tall fescue as much as bluegrass or white clover. In  
18 GC and C pastures, white clover frequency was similar (avg 55%) and exhibited no  
19 seasonality, but it had a tendency to be lower in GC than C pastures. Increasing the  
20 goat component of pastures grazed with different ratios of goats to sheep increased  
21 white clover frequency (Lambert et al., 1987) because goats preferred not to graze  
22 white clover. Luginbuhl et al. (unpublished) observed that goats readily ate white clover

1 to a very short stubble at fence lines indicating that goats consume significant clover.  
2 Sweet vernal grass was present in the grazed pastures from the start of the second  
3 grazing season (Figure 10) and exhibited a strong spring seasonality ( $P < .01$ ), but  
4 played a minor role in the CTL compared to the grazed pastures ( $P < .01$ ). In addition,  
5 sweet vernal grass was observed at lower frequencies in GC than C pastures ( $P < .03$ ).  
6 Sweet vernal grass has been invading hay fields in the mountains of North Carolina in  
7 recent years and it is rejected by hay-fed cattle.

8 Unproductive weed species are shown in Table 1. Nimblewill exhibited a strong  
9 seasonality pattern ( $P < .02$ ), and was always observed at higher frequencies in fall than  
10 spring. However, no treatment difference was observed during the course of the study.  
11 Nimblewill is not considered a preferred grass by either goats or cattle, and increased  
12 nimblewill frequencies in pastures grazed with goats alone or with goats and cattle have  
13 been reported at this same site (Luginbuhl et al., 1999). The decline in nimblewill  
14 frequency observed during the course of the study may be due to increased shading in  
15 the CTL pasture and competition from other herbaceous species in the grazed pastures.  
16 Honeysuckle was controlled to a similar extent in both the GC and C pastures where its  
17 frequency remained low. Conversely, honeysuckle increased in frequency in the CTL  
18 pasture ( $P < .01$ ) because it tolerates shade. Dandelion was only present in the CTL  
19 pasture in April 1998 and April 1999. Dandelion frequency remained fairly similar in GC  
20 and C pastures, and higher than in the CTL pasture ( $P < .03$ ). In the grazed pastures,  
21 dandelion was observed at higher frequencies in spring than fall ( $P < .01$ ).

22

1 Horsenettle, a perennial broadleaf weed that spreads by creeping rhizomes,  
2 adventitious shoots from roots, and seeds (Uva et al., 1997), was absent from all  
3 pastures in spring except for a very low frequency observed in the C pasture in April  
4 1998 and April 1999. Conversely, horsenettle was always present when fall  
5 measurements were made. It is possible that measurements were taken in spring  
6 before the emergence of horsenettle. Horsenettle frequency decreased with time in the  
7 CTL pasture, whereas the opposite occurred in the grazed pastures ( $P < .01$ ).  
8 Horsenettle is not readily consumed by livestock, although goats and also cattle have  
9 been observed to occasionally nibble on horsenettle leaves, and consequently it can  
10 spread with little interference. This weed seems to be increasing in North Carolina  
11 pastures that are grazed on a regular basis.

12

13 The reduction in multiflora rose, black locust and other browse on pastures grazed by  
14 goats indicates that goats selected considerable woody species as shown by Merrill and  
15 Taylor (1981) and Malecheck and Provenza (1981). However, reports on botanical  
16 species changes over time due to grazing by goats and(or) cattle are limited. Grazing  
17 brush-infested pastures with different ratios of goats and sheep increased grasses and  
18 white clover populations (Clark et al., 1982; Yerex, 1986). Similarly, brush-infested  
19 mountain pastures grazed by goats alone or by goats and cattle grazing together  
20 showed increased overall vegetative ground cover and vegetative ground cover as  
21 grass, increased frequencies of bluegrass, tall fescue and white clover, and decreased  
22 frequencies of poison ivy, honeysuckle, nimblewill and wild strawberry (Luginbuhl et al.,

1 1999). In addition, the same authors reported dramatic reductions in multiflora rose  
2 height, density, leaf out, and in the percentage of live multiflora rose canes.

3

#### 4 **Conclusions**

5 The results of this experiment demonstrated that goats grazing with cattle or cattle  
6 grazing alone were effective in shifting botanical composition toward desirable forage  
7 species in overgrown mountain pastures. Goats effectively reduced the encroachment  
8 of mountain pastures by multiflora rose bushes and other woody species. Because  
9 multiflora rose is a persistent weed and difficult to eradicate, it would be beneficial to  
10 integrate goats into mountain grazing systems to maintain or improve pasture  
11 productivity. Manipulating goat numbers to strike a balance between grazing livestock  
12 and the plant community would be worth investigating. Woody species would provide a  
13 continuing source of palatable and nutritious browse for goats but could be controlled to  
14 minimize the loss of more favorable forage species preferred by other livestock species.

1 **Literature Cited**

- 2
- 3 Bryant, F. C., M. M. Kothmann, and L. B. Merrill. 1979. Diets of sheep, Angora goats,  
4 Spanish goats and White-tail deer under excellent range conditions. *J. Range*  
5 *Manage.*, 32:412-417.
- 6 Child, R. D., E. K. Byington, and H. H. Hansen. 1985. Goats in the mixed hardwoods of  
7 the Southeastern United States. In: F. H. Baker and R. K. Jones (Ed.) *Multispecies*  
8 *Grazing*. pp 149-158. Winrock International Institute for Agricultural Development.  
9 Morrilton, AK.
- 10 Clark, D. A., M. G. Lambert, M. P. Rolston, and N. Dymock. 1982. Diet selection by  
11 goats and sheep on hill country. *Proc. New Zealand Soc. Anim. Production* 42:155-  
12 157.
- 13 Coblenz, B. E. 1977. Some range relationships of feral goats on Santa Catalina Island,  
14 California. *J. Range Manage.* 30:415-419.
- 15 du Toit, P. F. 1972. The goat in a bush-grass community. *Proc. Grassland Soc. South*  
16 *Africa* 7:44-50.
- 17 Fedele, V., M. Pizzillo, S. Claps, P. Morand-Fehr, and R. Rubino. 1993. Grazing  
18 behavior and diet selection of goats on native pasture in Southern Italy. *Small*  
19 *Rumin. Res.* 11:305-322.
- 20 Harvey, T. E. 1996. Mountain pasture renovation and multiflora rose control utilizing  
21 goats alone or goats in combination with cattle. Masters of Agriculture Thesis.  
22 North Carolina State University, Raleigh, NC.

- 1 Harrington, G. N. 1982. Grazing behavior of the goat. In: III International Conf. on Goat  
2 Production and Disease. pp 398-402. Dairy Goat J. Publ. Co. Scottsdale, AZ.
- 3 Hofmann, R. R. 1985. Digestive physiology of the deer - their morphophysiological  
4 specialization and adaptation. The Royal Soc. New Zealand, Bull. 22:393-407.
- 5 Kay, S.H., W. M. Lewis, and K. A. Langeland. 1995. Integrated management of  
6 multiflora rose in North Carolina. 17 p. North Carolina Cooperative Extension  
7 Service Publication No. AG-536.
- 8 Lambert, M. G., D. A. Clark, and K. Betteridge. 1987. Grazing behavior of goats on  
9 weed-infested hill pastures in New Zealand. In: O. P. Santana, A. G. da Silva, W.  
10 C. Foote (Ed.) Proc. IVth International Conference on Goats. p 1307. EMBRAPA-  
11 DDT, Brazilia, Brazil.
- 12 Luginbuhl, J-M., T. E. Harvey, J. T. Green, Jr., M. H. Poore, and J. P. Mueller. 1999.  
13 Use of goats as biological agents for the renovation of pastures in the Appalachian  
14 region of the United States. Agroforestry Systems 44:241-252.
- 15 Mackenzie, D. 1993. Goat Husbandry. Fifth edition. Faber & Faber. London, UK.
- 16 Magadlela, A. M., M. E. Dabaan, W. B. Bryan, E. C. Prigge, J. G. Skousen, G. E.  
17 D'Souza, B. L. Arbogast, and G. Flores. 1995. Brush clearing on hill land pasture  
18 with sheep and goats. J. Agron. & Crop Sci. 174:1-8.
- 19 Malecheck, J. C., and F. D. Provenza. 1981. Feeding behavior of goats on rangelands.  
20 In: P. Morand-Fehr, A. Bourbouze and M. de Simiane (Ed.) Nutrition et Systèmes  
21 d'Alimentation de la Chèvre. Vol 1. pp 411-428. ITOVIC - INRA. Tours, France.
- 22 Mays, W.J., and L. P. Kok. 1988. Seed wasp on multiflora rose, *Rosa multiflora* in

1 Virginia. Weed Technol. J. 265-268.

2 Merrill, L. B., and C. A. Taylor. 1981. Diet selection, grazing habits, and the place of  
3 goats in range management. In: C. Gall (Ed.) Goat Production. pp 233-252. New  
4 York Academic Press, New York.

5 Mills, T. A., and W. B. Bryan. 1983. Improving hill pastures with grazing animals. Proc.  
6 Symp. Foothills for Food and Forest. pp 341-344. Corvallis, OR.

7 Norton, B. W. 1984. Nutrition of the Goat: A Review. Proc. Goat Nutrition and Research  
8 in the Tropics. pp 75-81. Brisbane, Australia.

9 Pearson, H. A., and A. Martin, Jr. 1991. Goats for vegetation management on the  
10 Ouachita National Forest. In: S. G. Solaiman and W. A. Hill (Ed.) Using Goats to  
11 Manage Forest Vegetation: A Regional Enquiry. pp 59-73. Tuskegee University,  
12 Tuskegee, AL.

13 SAS.1998. SAS/STAT User's Guide (Release 7.0). SAS Inst. Inc., Cary, NC.

14 Steel, R. G. D., J. H. Torrie, and D. A. Dickey. 1997. Principles and Procedures of  
15 Statistics. 3<sup>rd</sup> Ed. McGraw-Hill Company, New York, NY.

16 Uva, R. H., J. C. Neal, and J. M. DiTomaso. 1997. Weeds of the Northeast. Cornell  
17 University Press, Ithaca, NY.

18 Wilson, A. D., J. H. Leigh, N. L. Hindley, and W. E. Mulham. 1975. Comparison of the  
19 diets of goats and sheep on a *Casuarina cristada-Heterodendrum oleifolium*  
20 woodland community in western New South Wales. Aust. J. Exp. Agric. Anim.  
21 Husb. 15:45-53.

22 Yerex, D. 1986. The Farming of Goats, Fibre and Meat Production in New Zealand.

1 Ampersand Publishing Assoc. Ltd., Careterton, New Zealand.

Figure 1

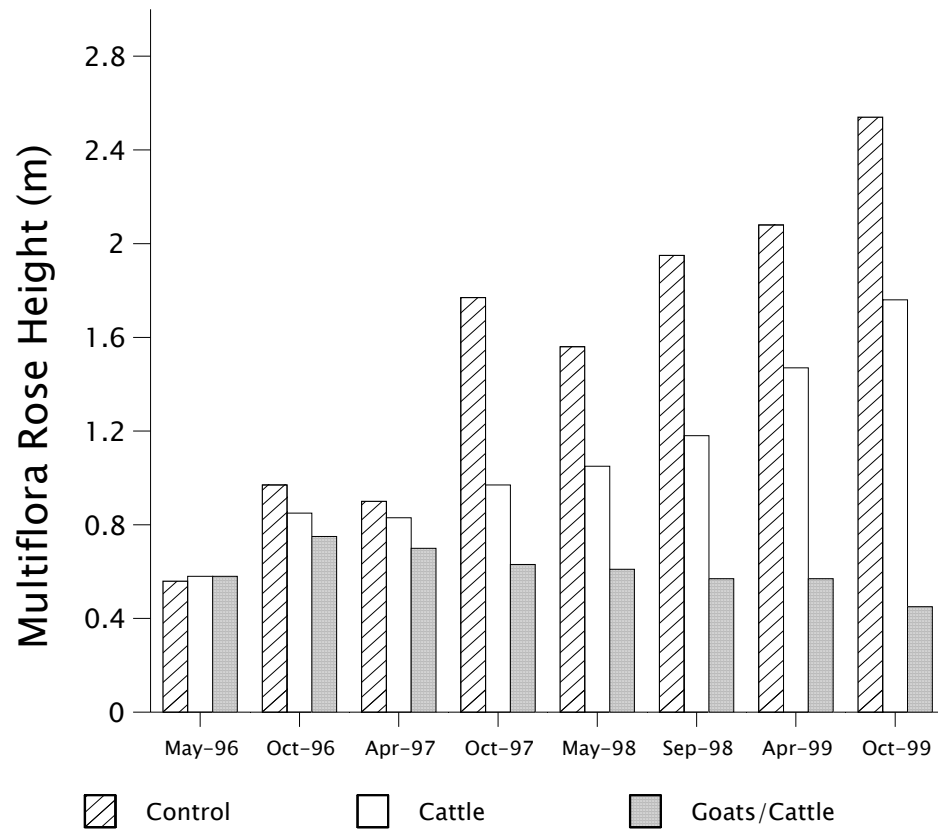


Figure 2

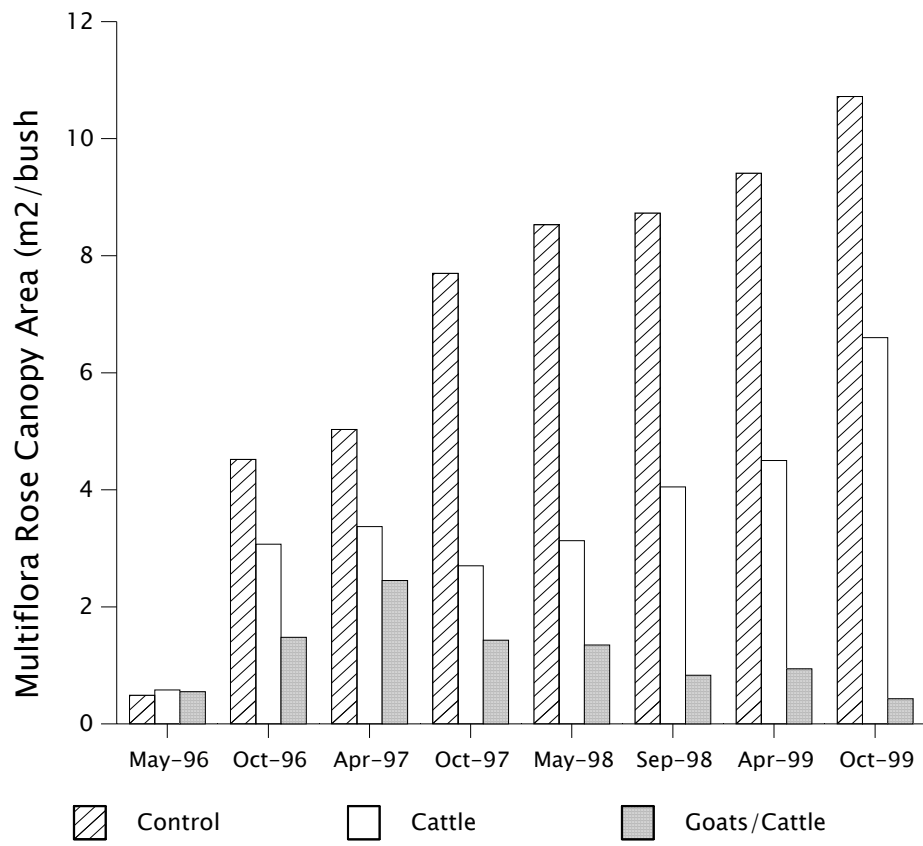


Figure 3

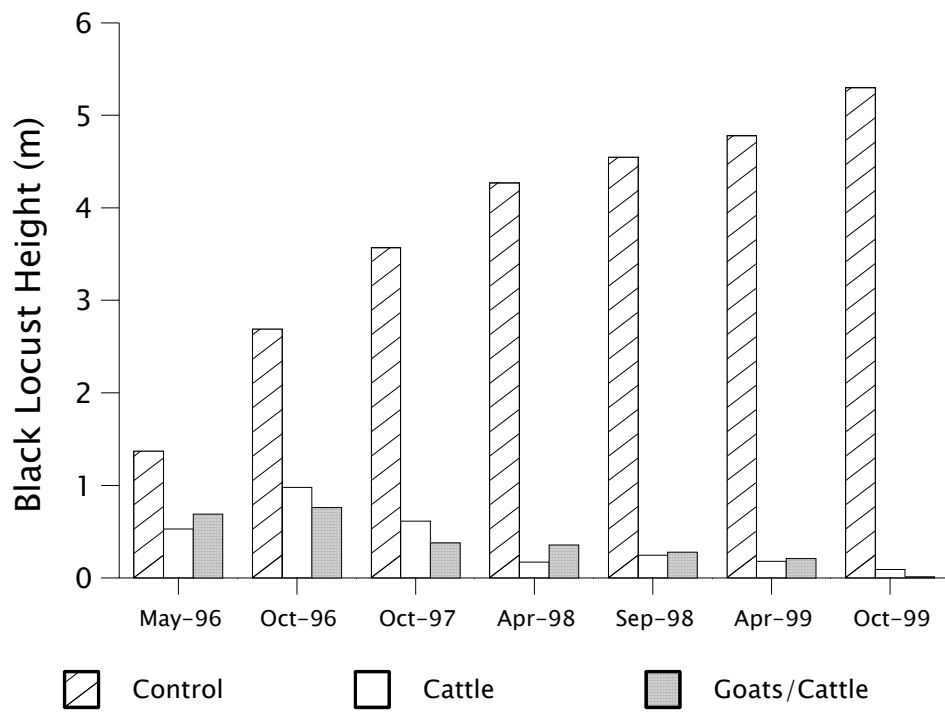


Figure 4

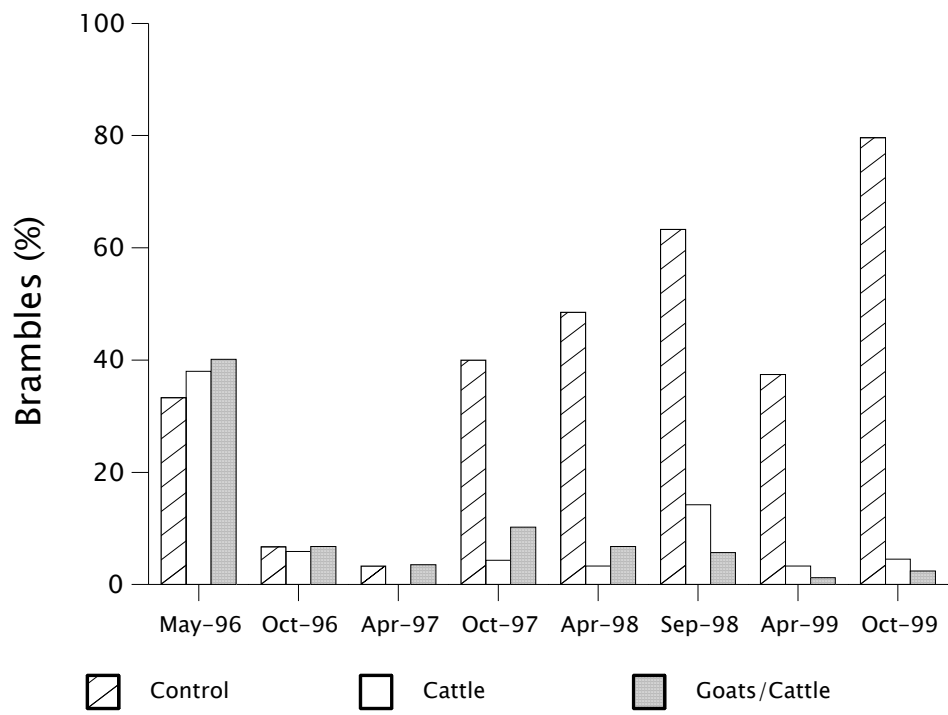


Figure 5

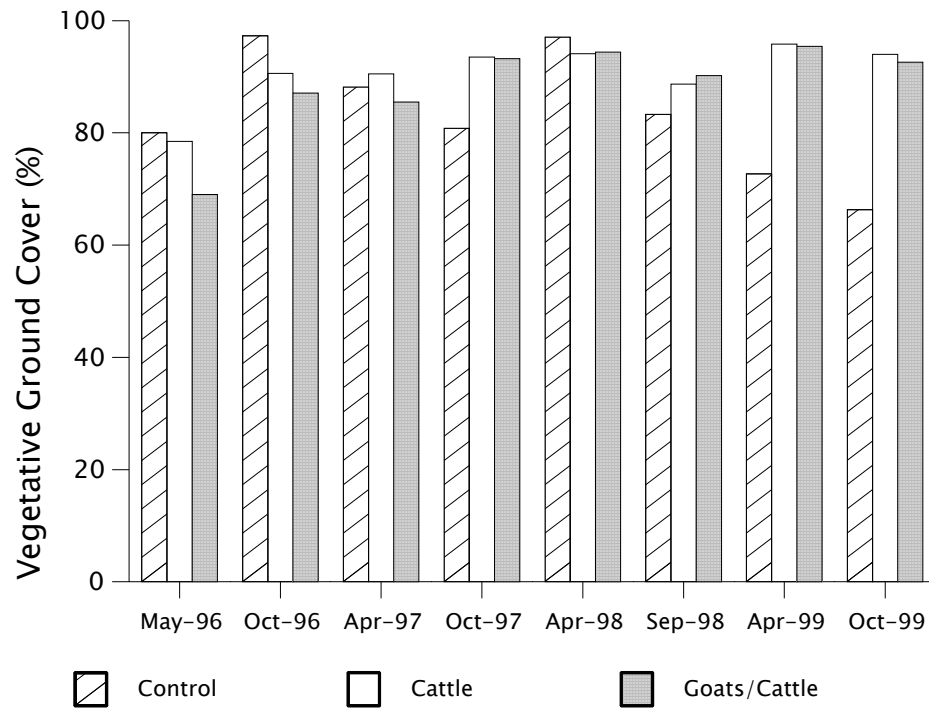


Figure 6

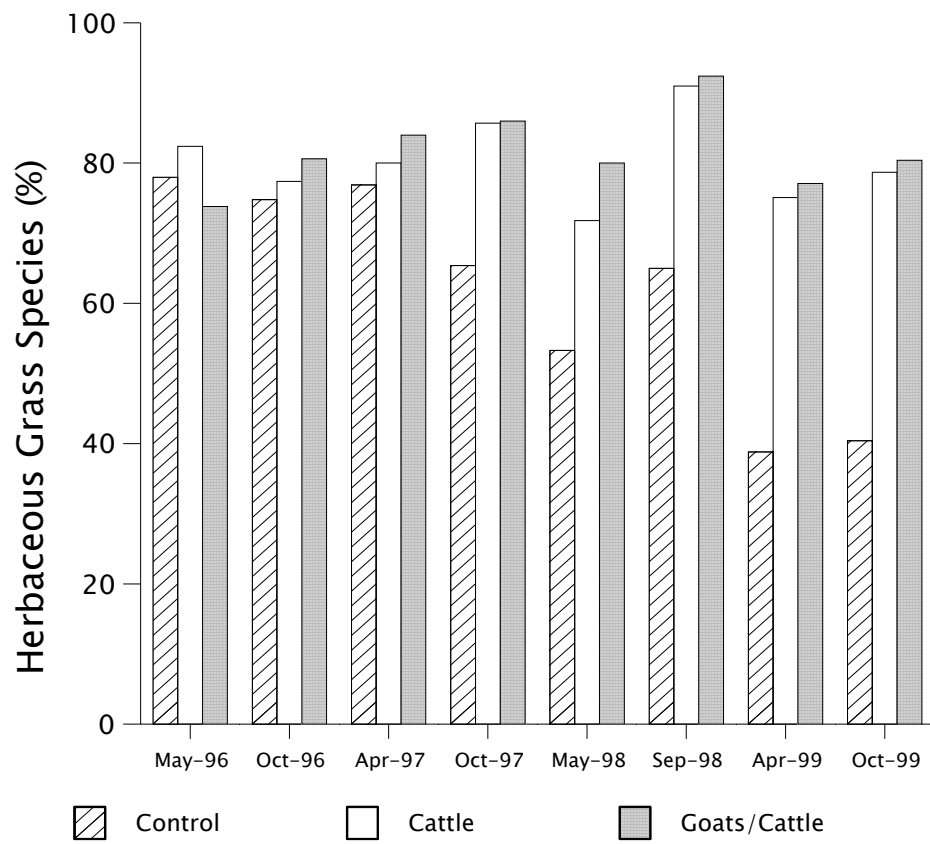


Figure 7

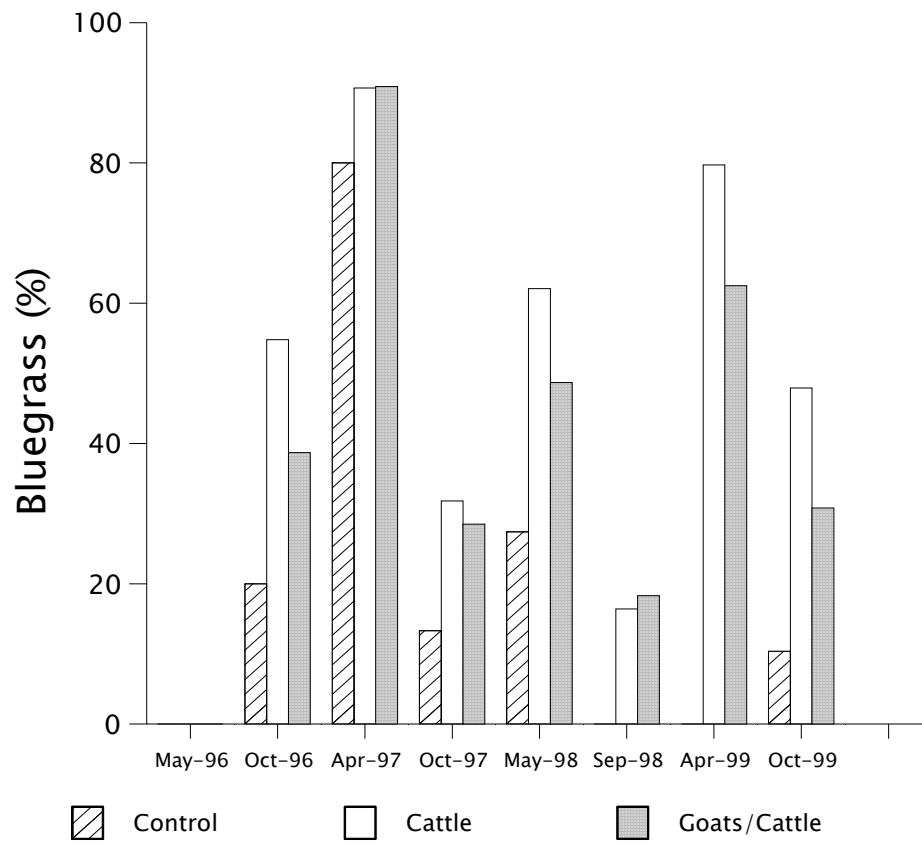


Figure 8

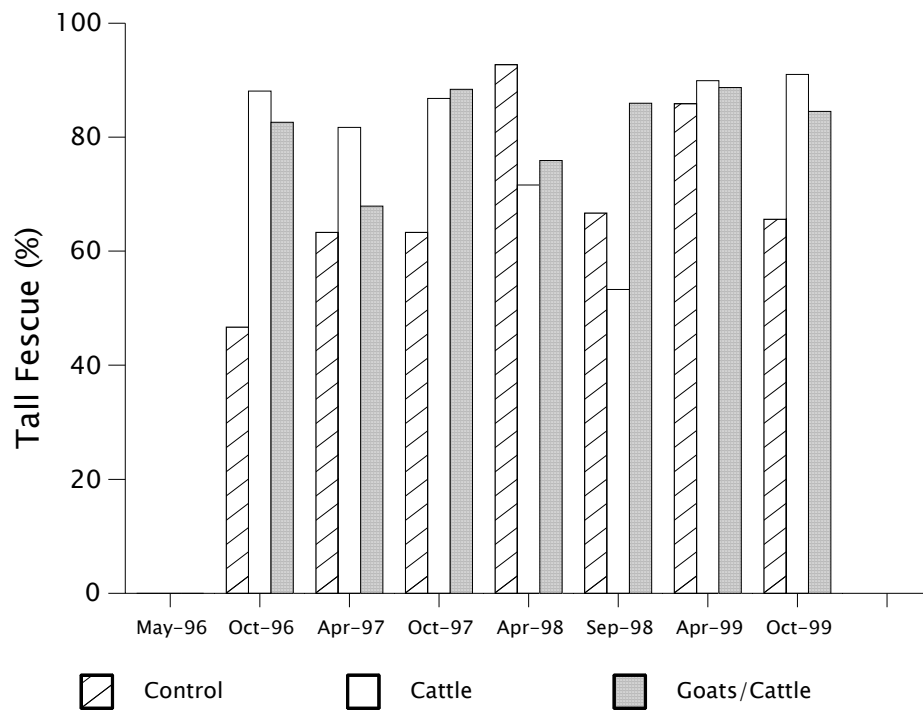


Figure 9

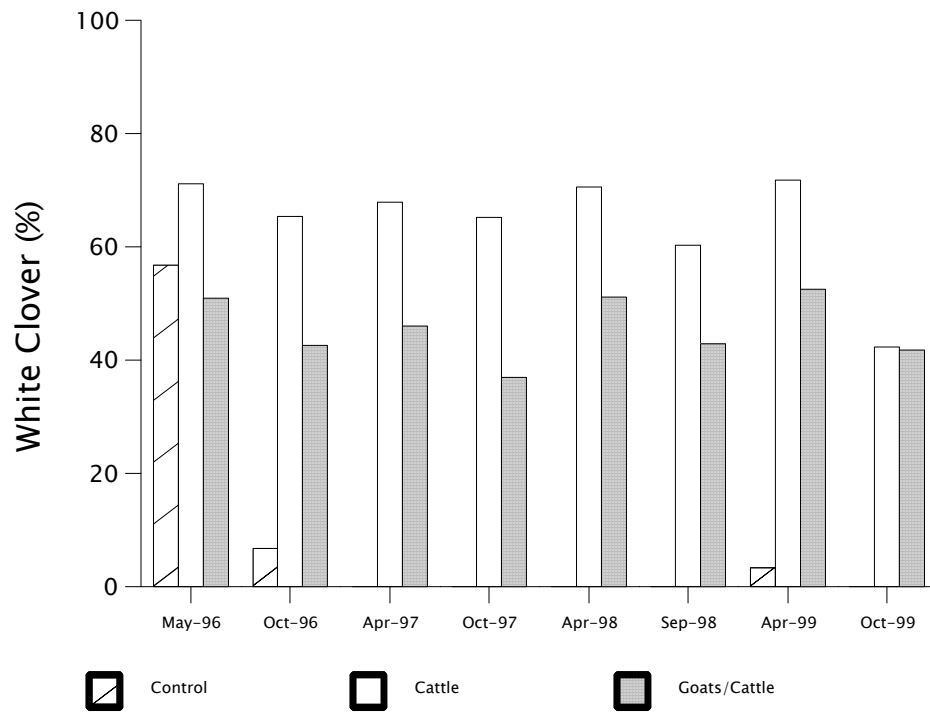
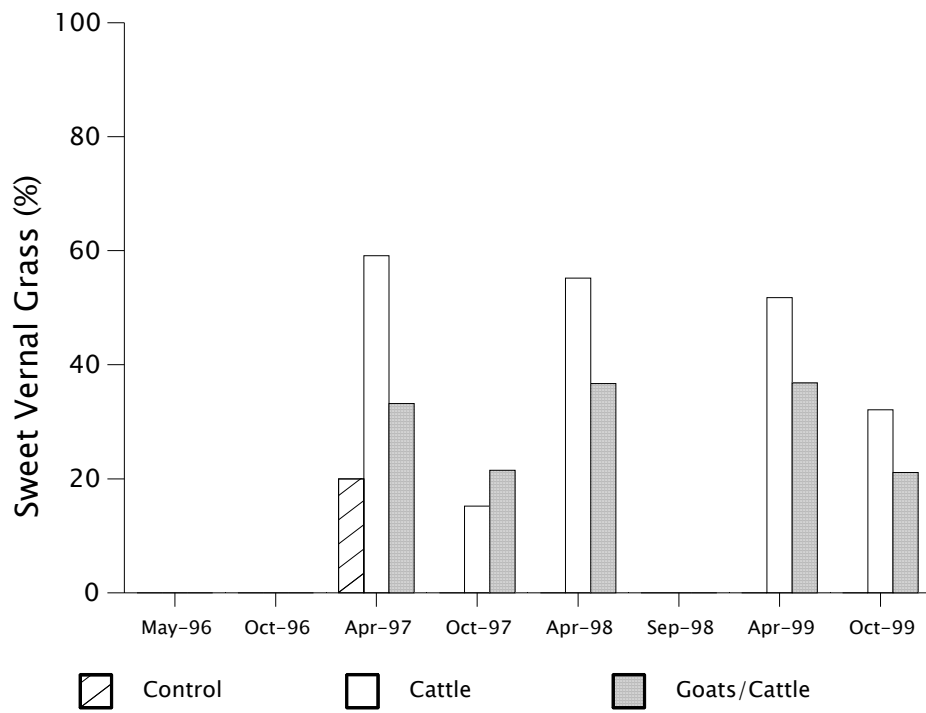


Figure 10



1 **Figure 1.** Effect of grazing mountain pastures in the Appalachian region of North  
2 Carolina with cattle alone or with goats and cattle on multiflora rose height (m) during  
3 four grazing seasons. Orthogonal contrasts: control vs cattle and goats + cattle ( $P <$   
4  $.01$ ); cattle vs goats + cattle ( $P < .01$ ); SE =  $.28$ .

5  
6 **Figure 2.** Effect of grazing mountain pastures in the Appalachian region of North  
7 Carolina with cattle alone or with goat and cattle on multiflora rose canopy area  
8 ( $m^2/bush$ ) during four grazing seasons. Orthogonal contrasts: control vs cattle and goats  
9 + cattle ( $P <.01$ ); cattle vs goats + cattle ( $P < .03$ ); SE =  $2.5$ .

10  
11 **Figure 3.** Effect of grazing mountain pastures in the Appalachian region of North  
12 Carolina with cattle alone or with goats and cattle on black locust height (m) during four  
13 grazing seasons. Orthogonal contrasts: control vs cattle and goats + cattle ( $P < .01$ );  
14 cattle vs goats + cattle ( $P < .87$ ); SE =  $.41$ .

15  
16 **Figure 4.** Effect of grazing mountain pastures in the Appalachian region of North  
17 Carolina with cattle alone or with goats and cattle on brambles frequency (%) during  
18 four grazing seasons. Season ( $P < .01$ ). Orthogonal contrasts: control vs cattle and  
19 goats + cattle ( $P < .01$ ); cattle vs goats + cattle ( $P < .5$ ); SE =  $5.0$ .

20  
21 **Figure 5.** Effect of grazing mountain pastures in the Appalachian region of North  
22 Carolina with cattle alone or with goats and cattle on percent vegetative ground cover

1 during four grazing seasons. Orthogonal contrasts: control vs cattle and goats + cattle  
2 ( $P < .01$ ; cattle vs goats + cattle ( $P < .1$ ); SE = 3.9.

3

4 **Figure 6.** Effect of grazing mountain pastures in the Appalachian region of North  
5 Carolina with cattle alone or with goats and cattle on herbaceous grass species during  
6 four grazing seasons. Orthogonal contrasts: control vs cattle and goats + cattle ( $P <$   
7  $.01$ ); cattle vs goats + cattle ( $P < .5$ ); SE = 6.4.

8

9 **Figure 7.** Effect of grazing mountain pastures in the Appalachian region of North  
10 Carolina with cattle alone or with goats and cattle on bluegrass frequency (%) during  
11 four grazing seasons. Season ( $P < .01$ ). Orthogonal contrasts: control vs cattle and  
12 goats + cattle ( $P < .01$ ); cattle vs goats + cattle ( $P < .4$ ); SE = 8.8.

13

14 **Figure 8.** Effect of grazing mountain pastures in the Appalachian region of North  
15 Carolina with cattle alone or with goats and cattle on tall fescue frequency (%) during  
16 four grazing seasons. Season ( $P < .01$ ). Orthogonal contrasts: control vs cattle and  
17 goats + cattle ( $P < .3$ ); cattle vs goats + cattle ( $P < .7$ ); SE = 12.2.

18

19 **Figure 9.** Effect of grazing mountain pastures in the Appalachian region of North  
20 Carolina with cattle alone or with goats and cattle on white clover frequency (%) during  
21 four grazing seasons. Orthogonal contrasts: control vs cattle and goats + cattle ( $P <$   
22  $.02$ ); cattle vs goats + cattle ( $P < .2$ ); SE = 9.2.

1 **Figure 10.** Effect of grazing mountain pastures in the Appalachian region of North  
2 Carolina with cattle alone or with goats and cattle on sweet vernal grass frequency (%)  
3 during four grazing seasons. Season ( $P < .01$ ). Orthogonal contrasts: control vs cattle  
4 and goats + cattle ( $P < .01$ ); cattle vs goats + cattle ( $P < .03$ ); SE = 5.0.



Table 1. Effects of grazing mountain pastures in the Appalachian region of North Carolina with cattle alone or with goats and cattle on four unproductive weed species frequency during four grazing seasons.

Frequency, %	May 1996			Oct 1996			Apr 1999			Oct 1999			SEC	CTL vs C & GC <sup>a</sup>	C vs GC <sup>b</sup>	Season
	CTL	C	GC	CTL	C	GC	CTL	C	GC	CTL	C	GC		P <	P <	P <
Nimblewill	0	0	0	77	44	53	0	1.1	1.2	37	19	31	11	.23	.77	.02
Honeysuckle	0	0	0	17	4.1	16	52	6.7	9.7	35	5.7	5.6	6	.01	.38	.01
Dandelion	0	0	0	0	16	23	3.3	35	41	0	30	25	7	.03	.92	.01
Horsenettle	0	0	0	33	13	3.4	0	1.1	0	6.7	36	23	6	.01	.5	.09

<sup>a</sup>Orthogonal contrast: Control vs cattle and goats+cattle.

<sup>b</sup>Orthogonal contrast: Cattle vs goats + cattle.

<sup>c</sup>Standard error derived from the statistical model.